

S
A
M
P
L
E
B
A
L
L
O
T

A		B		C	
---	--	---	--	---	--

Sample Ballot
Caswell County, North Carolina
November 5, 2019

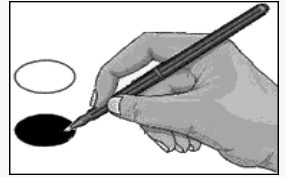


M001



BALLOT MARKING INSTRUCTIONS:

- A. With the marking device provided or a black ball point pen, completely fill in the oval to the left of each candidate or selection of your choice as shown.
- B. Where authorized, you may write in a candidate by filling in the oval and writing the name on the Write-in line.
- C. If you tear, deface or wrongly mark this ballot, return it to request a replacement.



TOWN OF MILTON

Mayor
(You may vote for ONE)

Patricia Williams

Write-in

Commissioner
(You may vote for FOUR)

Lisa Brandon

Valerie Sottile

Cathia B. Stewart

John Wallace

Write-in

Write-in

Write-in

Write-in

End of Ballot